



SMS Alarm communication

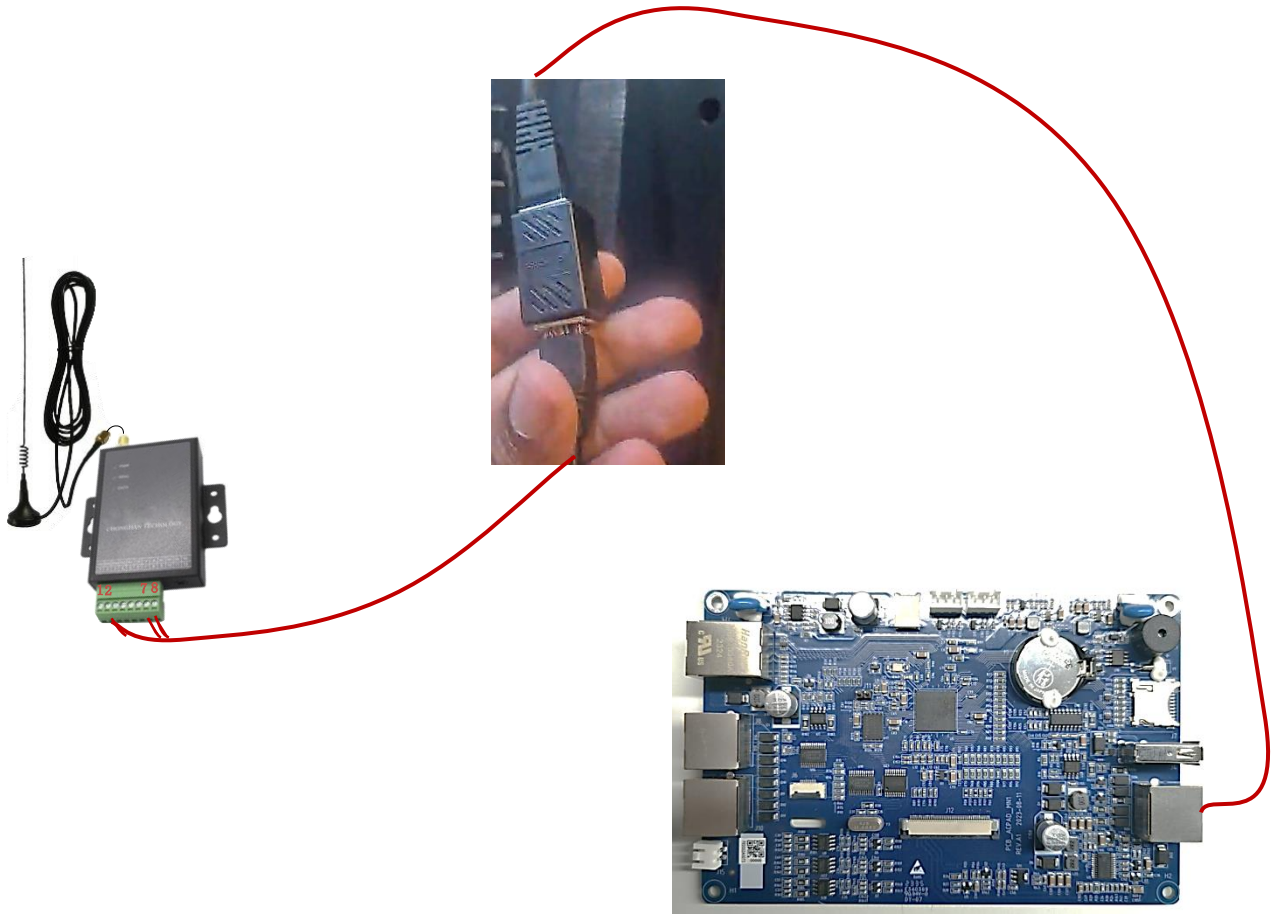
Guide Manual

AR-50 Series

Modular Data Center



1. Connect the SMS alarm(terminal) to the SNMP card or LCD



SMS port(LCD)

SMS device need add the SIM card ,please open the back side cover.



Please refer to Appendix A for interface definition

2. Log in the management website

Default IP address: 192.168.60.100

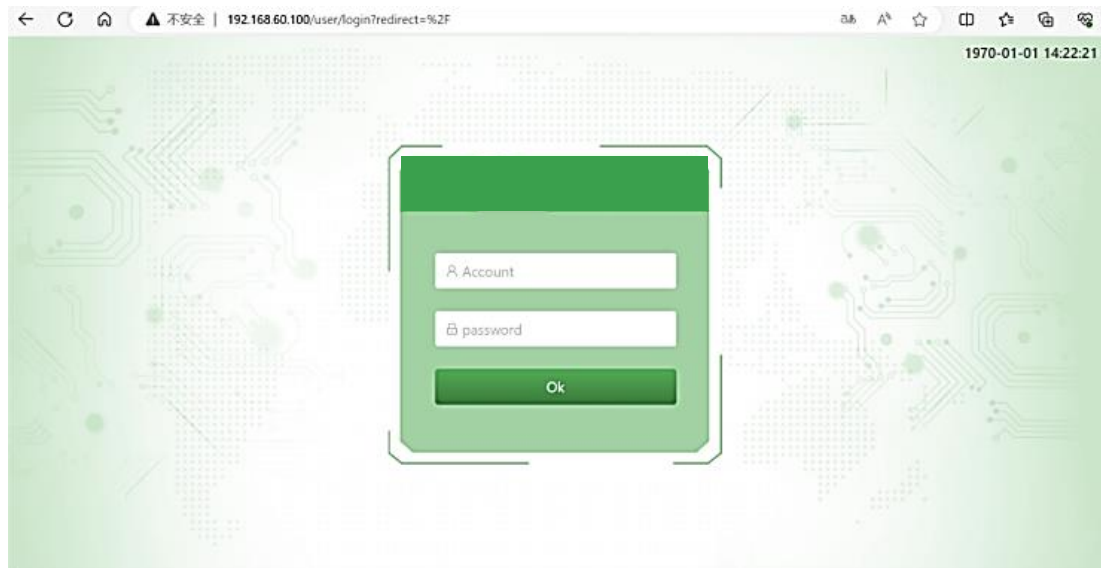
Account: SE

Password: se+(day+11)+(month+11)+(hour+11)

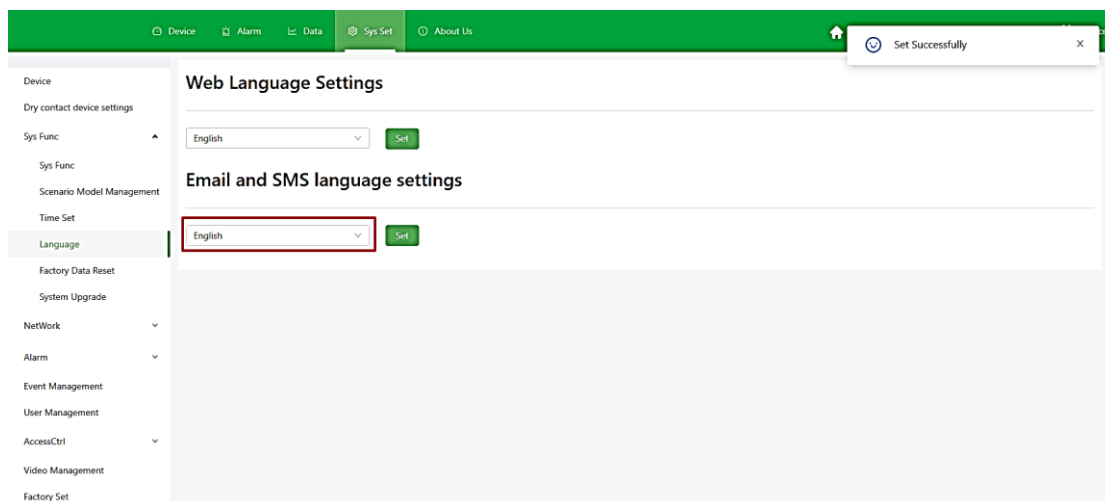
For example:

Time:1970-01-01 14:22:21

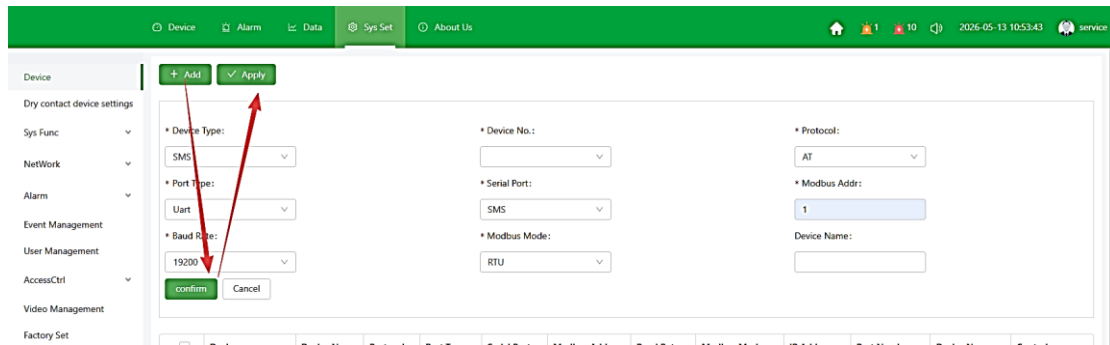
Password:se121225



3. Select the language of SMS

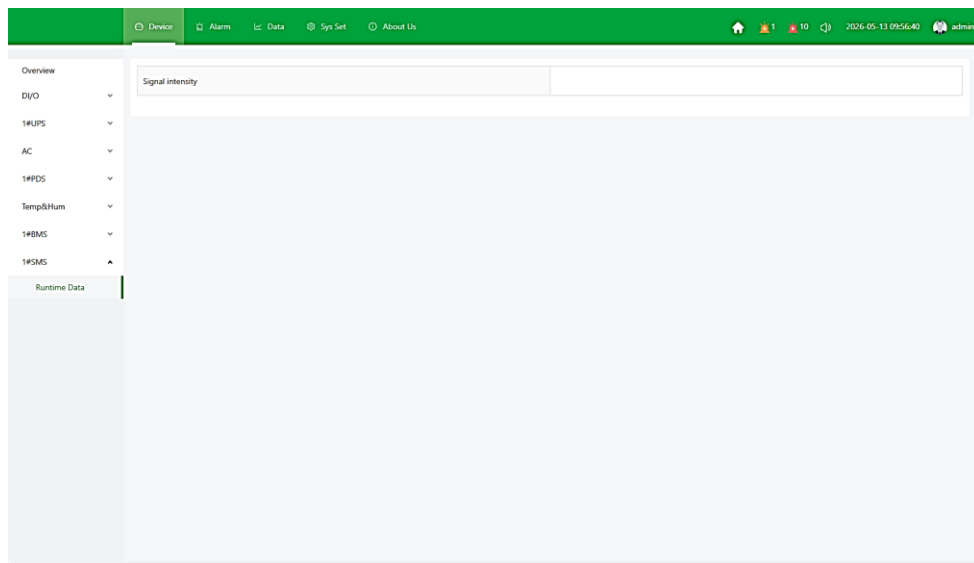
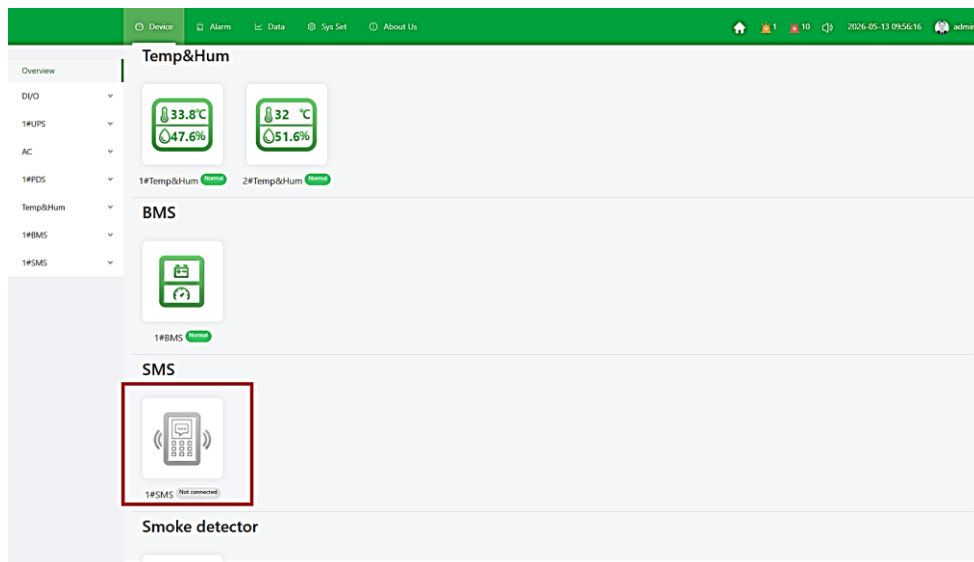


4. Add the SMS alarm on Sys set-Device



The parameters are shown in the image above

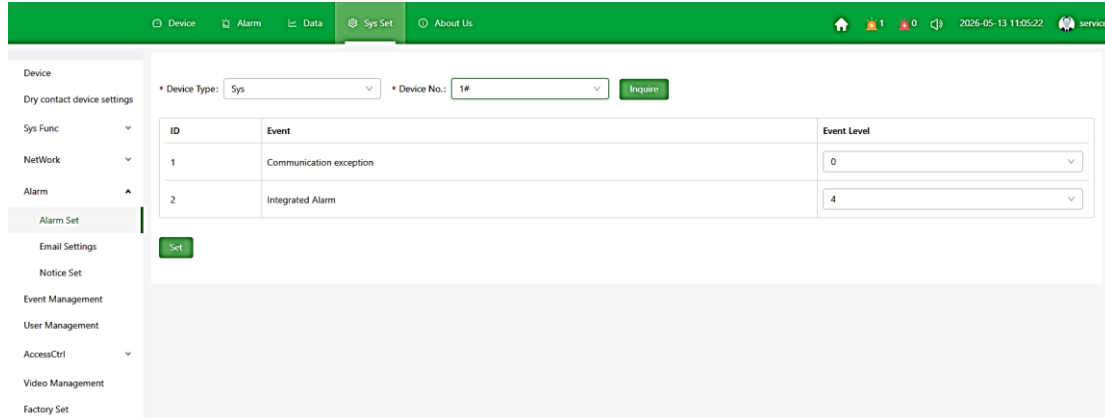
5. Check the status of SMS alarm



The SMS alarm communicates failed when the value of signal intensity is 0

6. Set alarm level of UPS

Select the corresponding device to set the alarm level



0: No alarm, no logging;

1: No alarm, logging only alarm occurrences;

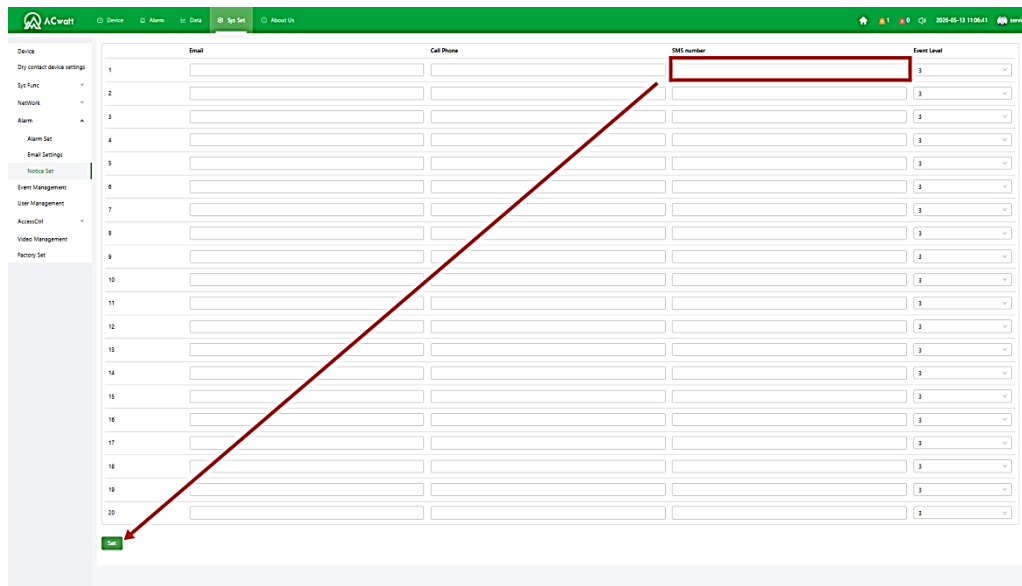
2: No alarm, logging both alarm occurrences and disappearances;

3: General alarms with logging;

4–15: Severe alarms with logging. (Default is 4; other numbers indicate voice message notification levels.)

7. Set recipients of SMS alarms

When fill the cell phone and SMS number,remember to add the International dialing codes at the front of the phone number



Recipients will not receive the alarm that event level lower than the event level of personnel

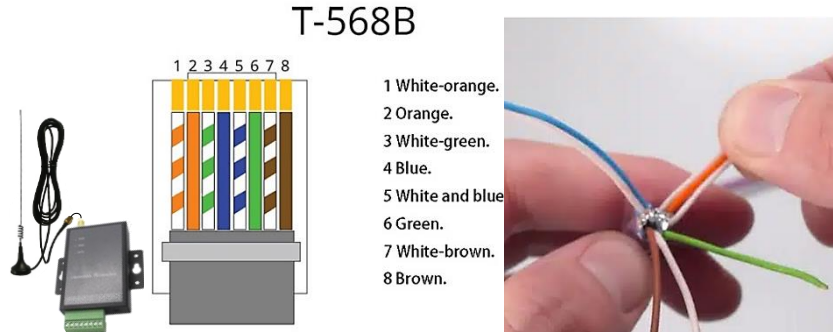
Remember to click the “set” button after configuring the related parameter

8. Test

Trigger an alarm to test whether a text message alarm will be sent

Annex.A Interface definition

SMS Terminal



SMS terminal	PIN 1	PIN 2	PIN 7	PIN 8
Definition	VIN	GND	RS485-A	RS485-B
RJ45	7&8	4&5	1 White-orange	2 Orange

1) Cut off one end of the standard network cable and connect the corresponding colored cable to the terminal.

SMS port of LCD

PIN	definition	description
1	UART0_TXD_232	RS232 receives the signal for commissioning
2	UART0_RXD_232	RS232
3	UART5_TXD_232	The SMS alarm RS232 sends a signal
4	GND	Power ground wire
5	GND	Power ground wire
6	UART5_RXD_232	The SMS alarm RS232 receives the signal
7	+12/24V	SMS alarm power supply
8	+12/24V	SMS alarm power supply